



Designed to meet the needs of active uniforming, our moisture-wicking, snag-resistant 1/4-zips have the Silk Touch hand you've loved for years plus PosiCharge® technology for exceptional color-locking performance.

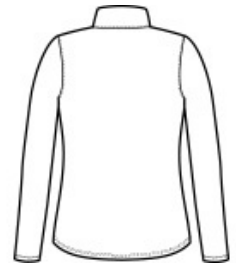
- 4-ounce, 100% polyester double knit with PosiCharge technology
- Cadet collar
- Contrast inner collar
- Tag-free label
- Front seaming
- Sleeve seaming
- Binding at cuffs
- Curved hem

**CARE INSTRUCTIONS**

Machine wash cold With like colors Do not bleach Do not use fabric softener Tumble dry low Remove promptly Cool iron if needed Do not dry clean



front



back

**HOW TO MEASURE**


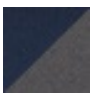





**BUST**  
Measure under the arm and around the fullest part of the bust with arms down, keeping tape horizontal.

**SIZE CHART**

	XS	S	M	L	XL	XXL	3XL	4XL
Size	2	4/6	8/10	12/14	16/18	20/22	24/26	28/30
Bust	32-34	35-36	37-38	39-41	42-44	45-47	48-51	52-55

**COLOR INFORMATION**

				
Black/ Steel Grey PMS NTR BLACK	Navy/ Steel Grey PMS 533C	Grey/Red/ Black PMS 187C	Royal/ Steel Grey PMS 3597C	Steel Grey/ Black PMS 7540C