

**DISCONTINUED Sport-Tek® Ladies Tech Fleece Hooded Sweatshirt. LST250**



Snag-resistant and pill-resistant with a matte finish, the double-knit construction enhances breathability and moisture wicking, while a Graphite mesh hood lining and two-tone draw cord add an athletic edge.

- 100% polyester
- Gently contoured silhouette
- Three-panel hood
- Two-tone, textured draw cords
- Closed-hole Graphite mesh hood lining
- Taped neck
- Raglan sleeves
- Integrated front pouch pocket
- Elongated rib knit cuffs and hem

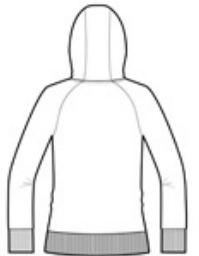
Due to the nature of 100% polyester performance fabrics, special care must be taken throughout the printing process.

**CARE INSTRUCTIONS**

Machine wash cold. Do not bleach. Tumble dry low. Remove promptly. Warm iron if necessary.



front



back

**HOW TO MEASURE**



**BUST**

Measure under the arm and around the fullest part of the bust with arms down, keeping tape horizontal.

**SIZE CHART**

|      | XS    | S     | M     | L     | XL    | XXL   | 3XL   | 4XL   |
|------|-------|-------|-------|-------|-------|-------|-------|-------|
| Size | 2     | 4/6   | 8/10  | 12/14 | 16/18 | 20/22 | 24/26 | 28/30 |
| Bust | 32-34 | 35-36 | 37-38 | 39-41 | 42-44 | 45-47 | 48-51 | 52-55 |

**COLOR INFORMATION**