

PORT AUTHORITY

Port Authority® Ladies Long Sleeve Ombre Plaid Shirt LW672



Casual and cool, this unique ombre plaid shirt has stretch and is perfect for a uniform look that is laid back, yet polished.

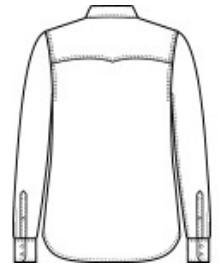
- 4.6-ounce, 59/39/2 cotton/polyester/spandex
- Lightly brushed twill plaid
- Easy Care
- Open collar
- Bias-cut back yoke
- Bust darts
- Double-chest pockets w/ bias-cut button flaps
- Pearlized buttons
- Double-button cuffs

CARE INSTRUCTIONS

Machine Wash Cold With Like Colors. Only Non-Chlorine Bleach If Needed. Tumble Dry Low. Warm Iron If Needed.



front



back

HOW TO MEASURE



BUST

Measure under the arm and around the fullest part of the bust with arms down, keeping tape horizontal.

SIZE CHART

	XS	S	M	L	XL	XXL	3XL	4XL
Size	2	4/6	8/10	12/14	16/18	20/22	24/26	28/30
Bust	32-34	35-36	37-38	39-41	42-44	45-47	48-51	52-55

COLOR INFORMATION



Deep Black
PMS BLACK C



Frost Grey
PMS NO MATCH



True Navy
PMS NO MATCH