



MERCER+METTLE®

Mercer+Mettle® Puffy Vest MM7214



With a design that easily transitions from office to street to home, and a soft, supple hand, this cold-weather layer is luxurious and high-performing. With a moisture-shedding DWR exterior, the interior features lofty, lightweight insulation for down-like warmth and the easy care of a synthetic.

Fabric+Weight

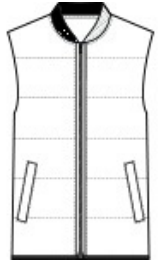
- 100% polyester
- 5K/3K waterproof breathable fabric
- 6-ounce, 100% polyester blown insulation

Features+Benefits

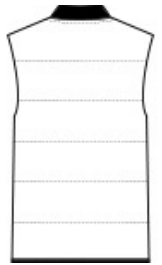
- Baseball-style rib knit collar
- Molded front zipper
- Zippered hand pockets
- Elastic binding at hem

CARE INSTRUCTIONS

Machine Wash Cold Gentle Cycle With Like Colors. Only Non-Chlorine Bleach When Needed. Tumble Dry Low. Cool Iron If Necessary. Do Not Dry Clean.

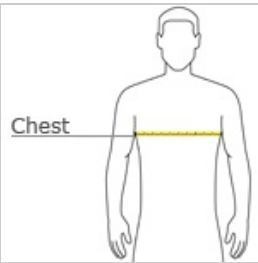


front



back

HOW TO MEASURE



CHEST WIDTH

Measure under the arm and around the fullest part of the chest with arms down, keeping tape horizontal.

SIZE CHART

	XS	S	M	L	XL	2XL	3XL	4XL
Chest	32-34	35-37	38-40	41-43	44-47	48-51	52-56	57-61

COLOR INFORMATION



Anchor Grey
PMS 426C



Deep Black
PMS BLACK C



Night Navy
PMS 532C