



# New Era® Venue Fleece Pullover Hoodie. NEA520

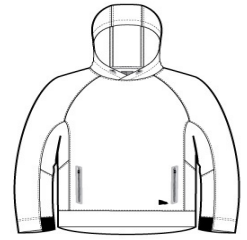


Perfect for most venues, this moisture-wicking fleece combines new-tech performance with old-school style.

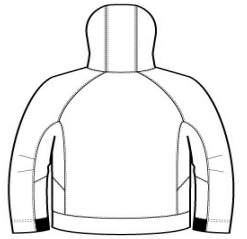
- 6.2-ounce, 100% polyester fleece
- Embossed New Era neck taping
- Heat transfer label for tag-free comfort
- 3-panel hood with rubber stoppers and draw cords
- Raglan sleeves
- Welded zippered pockets
- 2x2 rib knit cuffs
- Embossed silicone New Era flag logo at hem

### CARE INSTRUCTIONS

Machine wash cold with like colors; do not use fabric softener; tumble dry low; remove promptly; only non-chlorine bleach when needed; cool iron if necessary; do not dry clean.



front



back

### HOW TO MEASURE



#### CHEST WIDTH

Measure under the arm and around the fullest part of the chest with arms down, keeping tape horizontal.

### SIZE CHART

|       | XS    | S     | M     | L     | XL    | 2XL   | 3XL   | 4XL   |
|-------|-------|-------|-------|-------|-------|-------|-------|-------|
| Chest | 32-34 | 35-37 | 38-40 | 41-43 | 44-47 | 48-51 | 52-56 | 57-61 |

### COLOR INFORMATION

Please note: PMS code information is shown only when an exact match is available.



Black  
PMS BLACK C



Graphite  
PMS 7540C



Royal  
PMS 2757C



Shadow Grey  
PMS COOL GRAY  
10C



True Navy  
PMS 533C