



# The North Face® Sweater Fleece Vest NF0A47FA

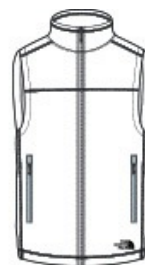


Stay warm on cool weather days with this heavy weight, sweater-knit fleece vest that easily transitions from the trails to town.

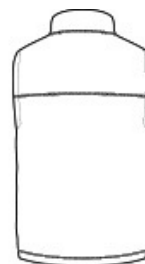
- 300 g/m<sup>2</sup> 100% polyester sweater knit with brushed fleece interior
- Constructed from 53% recycled polyester sweater knit
- Sweater-knit fleece with a brushed interior for comfort
- Reverse-coil center front zipper and hand pockets
- Contrast embroidered The North Face logo at left hem
- The North Face® products have decoration requirements that require special handling procedures and may need additional time to fulfill

### CARE INSTRUCTIONS

Do not dry clean. Hand or machine wash separately on delicate cycle in warm water. Use mild detergent. Rinse well. Secure or close all zippers and hook and loop closures before wash. Turn inside out before wash. Tumble dry on low heat. Do not bleach or iron.



front



back

### HOW TO MEASURE



#### CHEST WIDTH

Measure under the arm and around the fullest part of the chest with arms down, keeping tape horizontal.

### SIZE CHART

	S	M	L	XL	2XL	3XL
Chest	36-38	39-41	42-44	45-48	49-52	53-56

### COLOR INFORMATION



TNF Black Heather  
PMS BLACK C



TNF Medium Grey  
Heather  
PMS 424C



Urban Navy  
Heather  
PMS 433C