



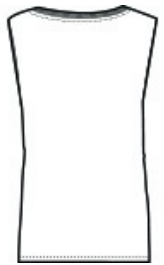
- 3.5-ounce, 65/35 poly/combed ring spun cotton, 40 singles
- 1x1 rib knit neck
- Henmed, oversized armholes
- Slight drop tail hem
- Tear-away label
- Side seamed
- Fitted

CARE INSTRUCTIONS

Machine wash cold. Only non-chlorine bleach when needed.
Tumble dry low. Do not iron decoration.



front



back

HOW TO MEASURE



BUST

Measure under the arm and around the fullest part of the bust with arms down, keeping tape horizontal.

SIZE CHART

	XS	S	M	L	XL	2XL
Size	2	4/6	8/10	12/14	16/18	20/22

COLOR INFORMATION

Antique Denim PMS 7545C	Antique Gold PMS 2011C	Black PMS 412C	Charcoal PMS 4140C	Red PMS 711C	Shiraz PMS 4095C	Smoked Paprika PMS 2343C	Stonewash Denim PMS 5435C	Stonewash Green PMS 4184C	White PMS 663C