



OGIO® Revive Full-Zip OG162



Revive your corporate or casual wardrobe with this comfortable, versatile double-knit layering essential that has modern angled lines and OGIO edge.

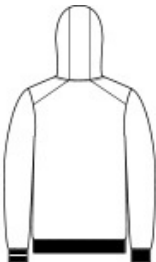
- 9-ounce, 67/30/3 poly/rayon/spandex double knit (Blacktop)
- 9-ounce, 65/32/3 poly/rayon/spandex double knit (Light Heather Grey)
- OGIO heat transfer label for tag-free comfort
- 3-panel hood
- Matte black eyelets with stretch draw cords and matte black dipped tips
- Reverse coil zipper
- Open pockets
- Rib knit cuffs
- Black woven OGIO label on left hip
- Rib knit hem

CARE INSTRUCTIONS

Machine Wash Cold With Like Colors. Do Not Use Fabric Softener. Do Not Bleach. Tumble Dry Low. Cool Iron.



front



back

HOW TO MEASURE



CHEST WIDTH
Measure under the arm and around the fullest part of the chest with arms down, keeping tape horizontal.

SIZE CHART

	XS	S	M	L	XL	2XL	3XL	4XL
Chest	32-34	35-37	38-40	41-43	44-46	47-49	50-53	54-57

COLOR INFORMATION



Blacktop
PMS Black C



Light Heather Grey
PMS COOL GRAY
5C