



OGIO® Flux 1/4-Zip OG823

This easy-to-layer piece has a clean, modern OGIO look w ith jacquard side panels for modern style.

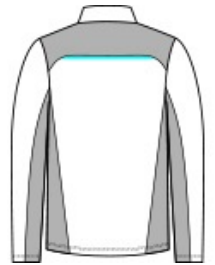
- 9.7-ounce, 96/4 poly/cotton knit shell
- 9.7-ounce, 96/4 poly/cotton jacquard knit insets
- Locking reverse coil zipper
- Forward shoulders
- Jacquard knit insets on shoulders and side panels
- Zippered pockets
- Jacquard knit back panel that rolls forward to the forward shoulder
- Black reflective welding detail on back
- Black reflective O heat transfer on front left hem

CARE INSTRUCTIONS

Machine Wash Cold Gentle Cycle With Like Colors. Only Non-Chlorine Bleach When Needed. Tumble Dry Low. Cool Iron If Necessary. Do Not Dry Clean.

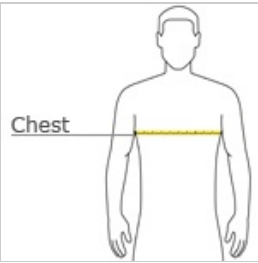


front



back

HOW TO MEASURE



CHEST WIDTH

Measure under the arm and around the fullest part of the chest w ith arms down n, keeping tape horizontal.

SIZE CHART

	XS	S	M	L	XL	2XL	3XL	4XL
Chest	32-34	35-37	38-40	41-43	44-46	47-49	50-53	54-57

COLOR INFORMATION



Blacktop Heather
PMS BLACK C



Tarmac Grey
Heather
PMS 7540C