



A pattern of dark, inky single-color hues mixed with color-on-color tones makes this fleece hoodie a true tie-dye standout.

- 7.8-ounce, 80/20 cotton/poly fleece
- 100% cotton face
- Sewn with dyeable thread
- Individually hand dyed
- Self-fabric lined hood
- Dyed-to-match draw cords
- Front pouch pocket
- Removable tag for comfort and relabeling

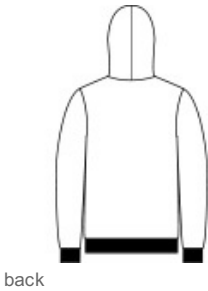
The tie-dye process infuses each garment with unique character. Please allow for slight color variation.

**CARE INSTRUCTIONS**

Machine Wash Cold Inside Out With Like Colors. Only Non-Chlorine Bleach When Needed. Tumble Dry Low. Do Not Iron.



front



back

**HOW TO MEASURE**



**CHEST WIDTH**

Measure under the arm and around the fullest part of the chest with arms down, keeping tape horizontal.

**SIZE CHART**

	S	M	L	XL	2XL	3XL	4XL
Chest	35-37	38-40	41-43	44-46	47-49	50-53	54-57

**COLOR INFORMATION**



Black/ White  
PMS NO MATCH



Graphite/ Light  
Grey  
PMS NO MATCH



Green Tea/ Black  
PMS NO MATCH



True Navy/ White  
PMS NO MATCH



Turquoise/ Team  
Navy  
PMS NO MATCH