

Port & Company® Youth Core Blend 3/4-Sleeve Raglan Tee. PC55YRS

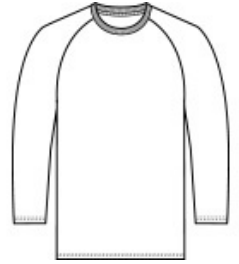


A classic, moisture-wicking team look at a great value.

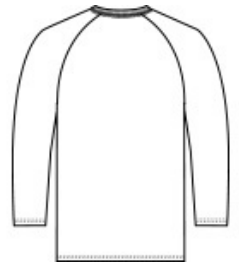
- 5.5-ounce, 50/50 cotton/poly
- Made with up to 5% recycled polyester from plastic bottles
- Removable tag for comfort and relabeling

CARE INSTRUCTIONS

Machine wash cold inside out with like colors. Only non-chlorine bleach when needed. Tumble dry medium. Do not iron.



front



back

HOW TO MEASURE



CHEST

With arms down at sides, measure around the upper body, under arms and over the fullest part of the chest.

SIZE CHART

| | XS | S | M | L | XL |
|-------|-------|-------|-------|-------|-------|
| Size | 4 | 6/8 | 10/12 | 14/16 | 18/20 |
| Chest | 25-26 | 26-28 | 28-30 | 30-32 | 32-35 |

COLOR INFORMATION



Athletic Heather/ Jet Black
PMS Black 6 C



Athletic Heather/ Navy
PMS 2380 C



White/ Athletic Maroon
PMS 504 C



White/ Dark Green
PMS 5467 C



White/ Jet Black
PMS Black 6 C



White/ Navy
PMS 2380 C



White/ Purple
PMS 7672 C



White/ Red
PMS 200 C



White/ Royal
PMS 2133 C