



# Russell Outdoors™ Realtree® Colorblock Performance 1/4-Zip RU152

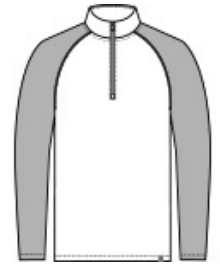


This performance layer has a reverse coil zipper that also makes it a great office casual style. Moisture-wicking for hiking, camping and other outdoor adventures. Colorblock body provides ample decoration space for your branding to shine.

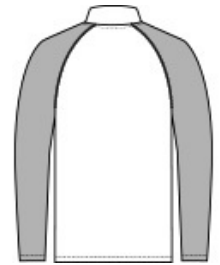
- 3.8-ounce, 100% polyester with moisture-wicking
- Tag-free label
- Realtree EDGE® print
- Reverse coil zipper
- Exterior woven Russell Outdoors™ tab at hem

### CARE INSTRUCTIONS

Machine Wash Cold With Like Colors. Do Not Use Fabric Softener. Do Not Bleach. Tumble Dry Low. Remove Promptly. Cool Iron If Needed.



front



back

### HOW TO MEASURE



#### CHEST WIDTH

Measure under the arm and around the fullest part of the chest with arms down, keeping tape horizontal.

### SIZE CHART

	XS	S	M	L	XL	2XL	3XL	4XL
Chest	32-34	35-37	38-40	41-43	44-46	47-49	50-53	54-57

### COLOR INFORMATION



Black/ Realtree Edge  
PMS BLACK C



Grey Concrete Heather/ Realtree Edge  
PMS COOL GRAY 10C



Olive Drab Green/ Realtree Edge  
PMS 7771C