



## LIMITED EDITION Tommy Bahama® Palmetto Paradise Polo ST224065TB



*We're proud to offer this direct-from-retail Tommy Bahama style, while supplies last.*

Supremely soft and adorned with contrast stitching, this polo delivers the comfort and heathered vintage-look you desire on off-duty days. You'll love its exceptionally soft fabric and washability.

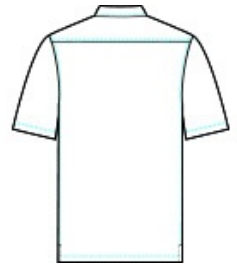
- 5.9-ounce, 70/30 Tencel™ Modal/polyester
- Self-fabric collar
- 3-button placket
- Distinctive contrast stitching plus contrast fabric at inner placket and inner collar
- Embroidered Marlin on left sleeve

### CARE INSTRUCTIONS

Machine Wash Cold With Like Colors. Gentle Cycle. Non-Chlorine Bleach If Needed. Tumble Dry Low. Cool Iron Or Dry Clean.



front



back

### HOW TO MEASURE



#### CHEST WIDTH

Measure under the arm and around the fullest part of the chest with arms down, keeping tape horizontal.

### SIZE CHART

|       | S     | M     | L     | XL    | 2XL   | 3XL   |
|-------|-------|-------|-------|-------|-------|-------|
| Chest | 36-38 | 39-41 | 42-44 | 45-47 | 48-50 | 51-53 |

### COLOR INFORMATION

**Please note: PMS code information is shown only when an exact match is available.**



Black  
PMS BLACK 3C



Denim  
PMS 7546C



Team Blue  
PMS 7686C



Viridian Pine  
PMS 7736C