



This double knit, cotton-rich pullover is a triumph with integrated pockets and rubberized zippers for a modern look and feel.

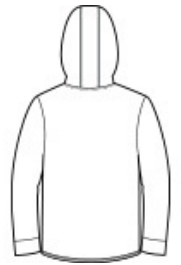
- 7.1-ounce, 71/29 cotton/poly double-knit fleece
- Tag-free label
- Three-panel hood
- Front pouch pocket with integrated rubberized zippered pocket
- Slight drop tail hem

**CARE INSTRUCTIONS**

Machine wash cold with like colors; do not use fabric softener; only non-chlorine bleach, when needed; tumble dry low; remove promptly; cool iron, if necessary; do not dry clean.



front



back

**HOW TO MEASURE**




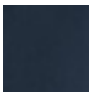


**CHEST WIDTH**  
Measure under the arm and around the fullest part of the chest with arms down, keeping tape horizontal.

**SIZE CHART**

	XS	S	M	L	XL	2XL	3XL	4XL
Chest	32-34	35-37	38-40	41-43	44-46	47-49	50-53	54-57

**COLOR INFORMATION**

			
Black PMS NTR BLACK C	Black Heather PMS NTR BLACK C	Dark Grey Heather PMS COOL GRAY 10 C	Navy PMS 5255C