

**PORT AUTHORITY.**

## DISCONTINUED Port Authority® Marled Crew Sweater. SW417

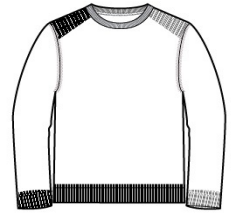


Two-toned marled yarns give this warm sweater a handsome look.

- 60/40 cotton/acrylic
- Fully fashioned seams
- Saddle shoulders with back-to-front rib detail
- 1x1 rib knit neck, cuffs and hem

### CARE INSTRUCTIONS

Machine wash cold with like colors, only non-chlorine bleach when needed, tumble dry low, low iron if needed.



front



back

### HOW TO MEASURE



#### CHEST WIDTH

Measure under the arm and around the fullest part of the chest with arms down, keeping tape horizontal.

### SIZE CHART

	XS	S	M	L	XL	2XL	3XL	4XL
Chest	32-34	35-37	38-40	41-43	44-46	47-49	50-53	54-57

### COLOR INFORMATION

Please note: PMS code information is shown only when an exact match is available.

