

PORT AUTHORITY

Port Authority® Long Sleeve Chambray Easy Care Shirt W382



For an all-day smart look, this Easy Care shirt combines traditional chambray style with updated, modern details.

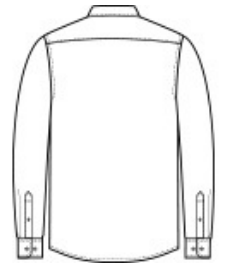
- 2.9-ounce, 60/40 cotton/polyester chambray
- Easy Care
- Button-down collar
- Tonal rimmed buttons
- Left chest pocket
- Rounded adjustable cuffs
- Grey topstitching

CARE INSTRUCTIONS

Machine Wash Warm With Like Colors. Only Non-Chlorine Bleach If Needed. Tumble Dry Low. Warm Iron If Needed.



front



back

HOW TO MEASURE



CHEST WIDTH

Measure under the arm and around the fullest part of the chest with arms down, keeping tape horizontal.

NECK

Measure around the fullest part of the neck at the base.

ARM

Place hand on hip. Start at the center of the back of the neck and measure across the shoulder, to the elbow, and then down to the wrist.

SIZE CHART

| | XS | S | M | L | XL | 2XL | 3XL | 4XL |
|-------|-------------|-------------|-------------|-------------|-------------|-------------|-------------|-------------|
| Chest | 32-34 | 35-37 | 38-40 | 41-43 | 44-46 | 47-49 | 50-53 | 54-57 |
| Neck | 14 1/2 - 15 | 15 - 15 1/2 | 15 1/2 - 16 | 16 - 16 1/2 | 16 1/2 - 17 | 17 - 17 1/2 | 17 1/2 - 18 | 18 - 18 1/2 |
| Arm | 30 1/2 | 32 | 34 | 35 | 36 1/2 | 37 1/2 | 38 1/2 | 39 1/2 |

COLOR INFORMATION



Deep Black
PMS BLACK C



Estate Blue
PMS NO MATCH



Moonlight Blue
PMS NO MATCH