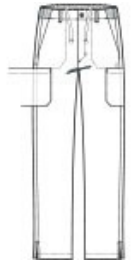




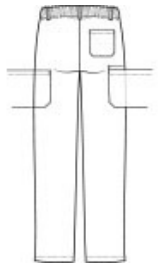
Wink™ Men's Premiere Flex™ Cargo Pant WW5058



- 78/20/2 poly/rayon/spandex
- Flat front w aistband with belt loops
- Full draw string w aist w ith elastic back
- Button opening w ith zipper fly
- Front slash pockets
- Cargo pockets w ith interior pocket
- Single back pocket
- Straight leg
- Side vents
- Wink™ heat transfer logo at front left pocket
- Modern fit
- 31-inch inseam



front

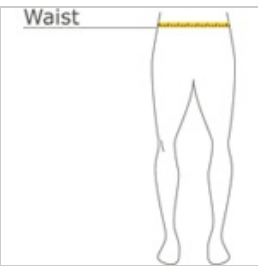


back

CARE INSTRUCTIONS

Machine Wash Cold With Like Colors. Gentle Cycle. Use Only Non-Chlorine Bleach When Needed. Tumble Dry Low. Remove Promptly From Dryer. Cool Iron When Needed.

HOW TO MEASURE



WAIST

Measure around the smallest part of the natural waist.

SIZE CHART

	XS	S	M	L	XL	2XL	3XL	4XL	5XL
Waist	25-26	27-29	30-32	33-36	37-40	41-44	45-48	49-52	53-57

COLOR INFORMATION



Black
PMS PROCESS
BLACK C



Ceil Blue
PMS 659C



Navy
PMS 654C



Pewter
PMS 432C



Royal
PMS 2145C



Teal Blue
PMS 320C



White
PMS WHITE



Wine
PMS 222C